

Quick start guide

3D Scanner

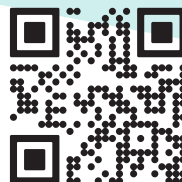
EinScan-SE Elite Desktop 3D Scanner



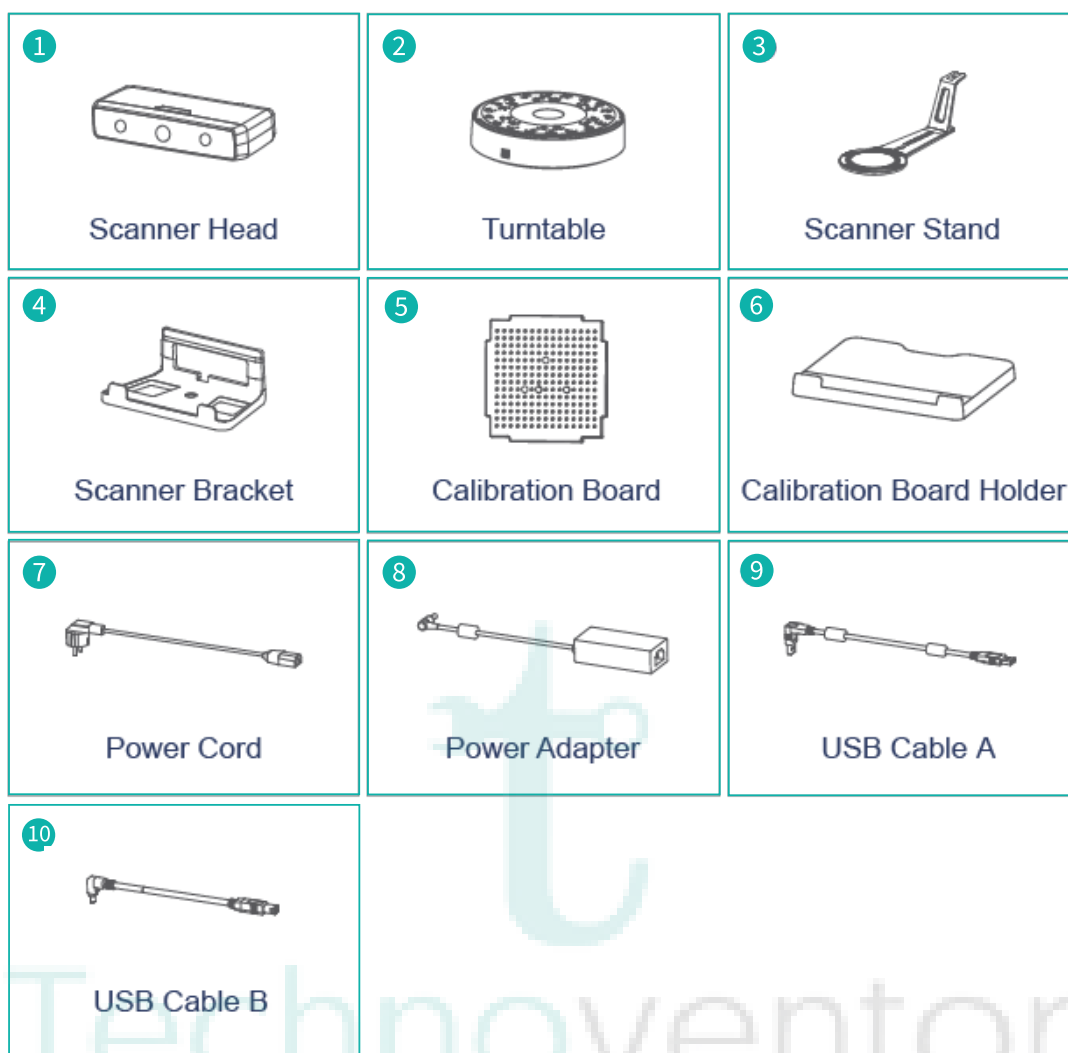
SHINING 3D®

Scan to Download the Software

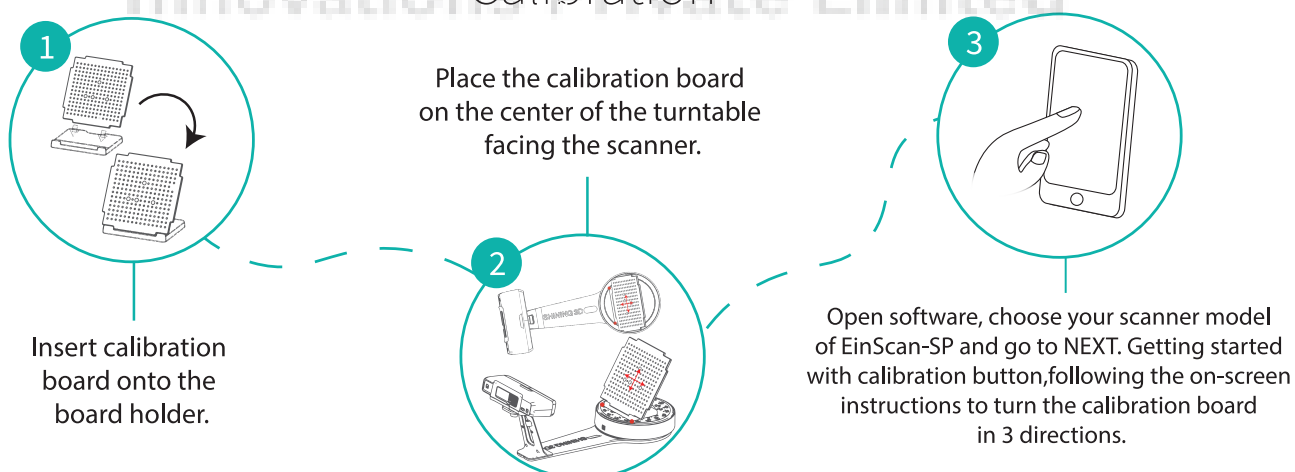

Technoventor
Innovations Private Limited



Machine Appearance & Accessories



Calibration

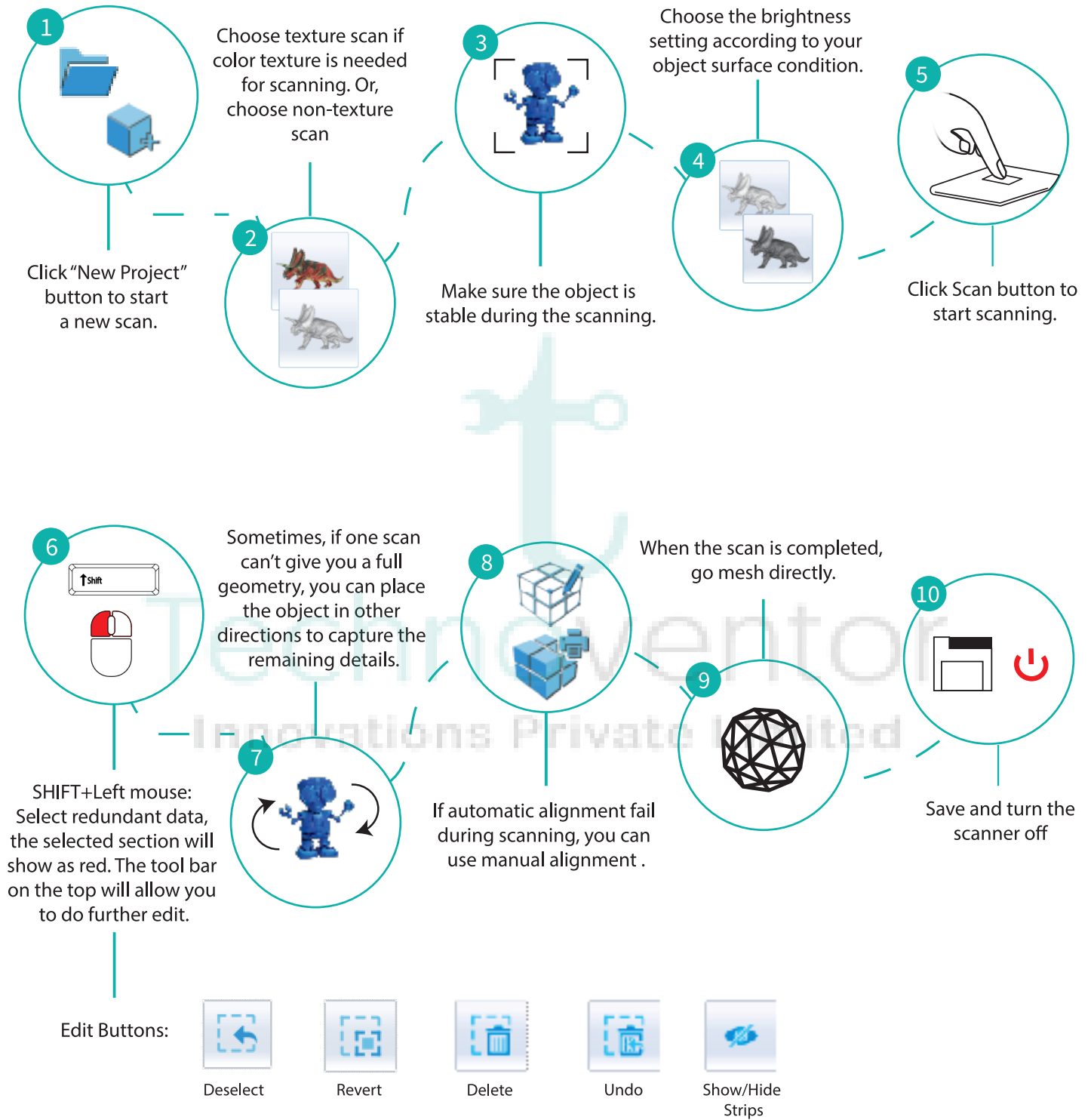


NOTE: Rotate the calibration board only during calibration.

TIPS:

You should calibrate the scanner in the initial set-up, or IF YOU MOVE THE SCANNER OR TURNABLE. When you find the scanned quality is not as good as initial set-up, you can recalibrate your scanner. Calibration needed when alignment mistake or failure frequently appear during the scanning.

Operation



DO's

- ✓ Scan Objects larger than 30*30*30 mm (1.2*1.2*1.2 in)
- ✓ Scan Objects smaller than 250*250*250 mm (38*38*38 in)
- ✓ Scan Object weighing less than 5 kg (11 lbs)

Note: If the size and weight of the object are out as mentioned above, please scan on tripod without turntable by Fixed Scan Mode.

TIP : Painting white powder on objects will improve the scan quality.

DONT's

- ✗ Do not scan transparent objects like glass.
- ✗ Do not scan shining or reflective objects like varnished metal parts.
- ✗ Do not scan dark color object like black keyboard
- ✗ Do not scan fuzzy objects like hair
- ✗ Do not scan moving objects
- ✗ Do not scan hollow pattern object like Eiffel Tower souvenirs
- ✗ Do not scan objects smaller than 30*30*30 mm (1.2*1.2*1.2 in)

PC Requirement

Operating System:	Win7 / 8 / 10 / 64bit
Port:	at least One USB2.0 / 3.0 port
RAM:	> 8 G
Graphic Card:	NVIDIA Series
Graphic Memory:	> 1 G
CPU:	i5 or higher

For any queries contact:

✉ service@technoventor.com

☎ 8828294964 / 7304419928